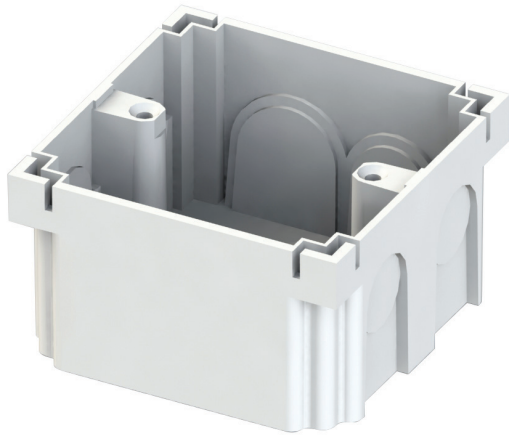


## ELECTRICAL ACCESSORIES

### Deep Sunk Box

#### PRODUCT SPECIFICATIONS



<b>General Data</b>	
Standard Compliance	SLS 1310
Country of Manufacture	Sri Lanka
<b>Technical Data</b>	
Sunk Box Type	Single
Number of Holes (Knock Downs)	9
External Dimensions (L*W*H)mm	87*87*47
Mounting Center Distance	60.3mm
Key Features	Provision of knock downs, 1 to 9
	Insulated separations between conduits
	Same mounting box can be used in case of a rewiring
	Manufactured using virgin material
	Suitable for both surface and sunk/flush type mounting
<b>Material Overview</b>	
Plastic	High Impact Polystyrene
Metal	Brass inserts
Colour	White